

Year 1 Topic: Famous Explorers



Key questions:

- What is an explorer?
- Who was Ernest Shackleton?
- Why did he travel to Antarctica?
- What form of transportation did he take to Antarctica?
- Who was Neil Armstrong?
- What form of transportation did he use?
- Why is he famous?

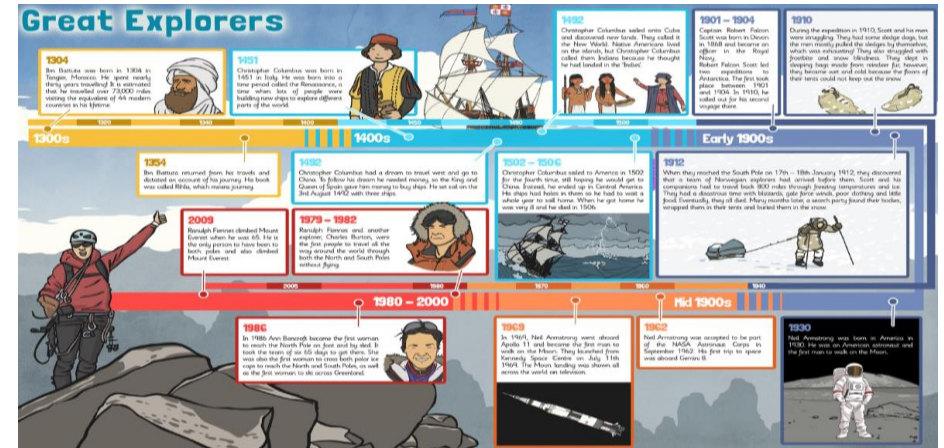
Key Facts and Dates

Ernest Shackleton and the Endurance

- 1) Sir Ernest Henry Shackleton was born on 1874 and died in 1922.
- 2) In August 1914 he set out to cross the South Polar Continent Antarctica.
- 3) Shackleton's crew was made of 26 men and 69 dogs. The ship was called Endurance.
- 4) Endurance became stuck on in the pack ice in the Weddell Sea and the men had to evacuate.
- 5) Endurance sank on 21st November 1915.

Neil Armstrong Moon Landing

- 1) Neil Armstrong was the first human to walk on the moon during the NASA (National Aeronautics and Space Administration) Apollo 11 mission on 20th July 1969. He completed the mission alongside co-pilots Edwin E. "Buzz" Aldrin and Michael Collins.
- 2) Around the world, more than half a billion people watched the Moon Landing. When Neil stepped foot on the moon for the first time, he said the now famous line, "That's one small step for man, one giant leap for mankind."
- 3) Neil walked a distance of about 60 metres on the surface of the moon —that's roughly the length of 11 Asian elephants!
- 4) The rocket that launched Neil and his crew into space - the Saturn V rocket - was as tall as a 36-storey building! The Launch Control Center - which housed the team of people responsible for overseeing the launch from the ground - was situated 3.5 miles from the launch pad itself.
- 5) The Lunar Module that Neil and Buzz piloted together to land on the moon was called the Eagle. It's where the now famous saying, "The Eagle has landed", comes from!



Vocabulary

Depot	A place where large amounts of raw materials or other supplies are kept until they are needed.
Rations	Having a limited amount of food or supplies for each person.
Compass	A compass is an instrument that you use for finding directions.
Frost bite	When parts of your body become damaged due to being very cold.
Capsize	A boat turns upside down in the water.
Dehydration	The amount of water in the body is dangerously low.
Blizzard	A very heavy snowstorm with strong winds.
Sun	A huge star that Earth and the other planets in our solar system orbit around.
star	A giant ball of gas held together by its own gravity.
moon	A natural satellite which orbits Earth or other planets.
planet	A large object, round or nearly round, that orbits a star.
sphere	A round 3D shape in the shape of a ball.
spherical bodies	Astronomical objects shapes like spheres.
satellite	Any object or body in space that orbits something else, for example: the Moon is a satellite of Earth.
orbit	To move in a regular, repeating curved path around another object.
astronomer	Someone who studies or is an expert in astronomy (space science).

Driver - Legacy

We will be learning about events in history.